

MTP61 is a miniature pocket transmitter ideal for location sound, theater and all situations where the smallest size is mandatory



**Multi-BAND  
RF**

The multi-band MTP61 currently has the widest tuning range of any wireless transmitter on the market offering a massive range of frequencies to choose from.



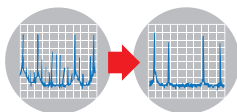
**Light and  
Robust**

Incredibly small, rounded bodypack for more comfortable wear in theater productions, movies and other applications requiring discreet placement. Thanks to the high resistance powder coating, it is a robust transmitter and its unique design offers protection against water splashes



**Bluetooth 5  
Long Range**

Monitor & control with Bluetooth via Wisycom Manager software or mobile device apps to adjust parameters in real time



**LINEAR  
Intermodulation FREE**

Advanced linear technology eliminates intermodulation distortion for more robust signal, extended range, and the ability to operate multiple transmitters in close proximity to each other without needing an intermod frequency plan.



**Ultrasonic  
HW Protection**

Integrated low-pass audio filter eliminates ultrasonic interference from devices such as focus pullers

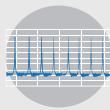


**IP66  
IP  
Protection**



**NB/WB High Density  
SW selectable with NB filters**

DSP based signal processing allows easy switching between wide and narrow band operation which, together with "Linear" mode allows intermod free frequency planning with as little as 200kHz channel spacing



**REC Embedded  
Recorder**

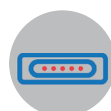
Audio recording on memory card (SD)



Simultaneous transmit and audio recording on internal 64GB micro SD memory card (except in USA)



Powering with Lithium-ion battery Model LBP61 3.7V, 1050 mAh, 3.9Wh



**Magnetic  
Connector**

Proprietary waterproof magnetic connector 5 pin:

- USB High Speed
- Power (also battery charging)
- LTC Timecode Sync



### CONFIGURATIONS

#### COUNTRY RANGE

<b>EU</b>	470-832 MHz
<b>UK1</b>	470-663 MHz + 960-1075 MHz
<b>UK2</b>	510-698 MHz + 960-1075 MHz
<b>JP1</b>	660-714 MHz
<b>JP2</b>	806-810 MHz
<b>JP3</b>	1240-1260 MHz

#### COUNTRY RANGE

<b>US*</b>	470-608 MHz + 614-663 MHz + 940-960 MHz <small>*Simultaneous recording and wireless transmission is not available on transmitters sold in the USA (code: MTP61-US)</small>
<b>CA</b>	470-608 MHz + 614-663 MHz + 940-960 MHz
<b>MX</b>	470-608 MHz + 614-832MHz
<b>KR</b>	470-663 MHz + 925-937,5 MHz

i.e. variants code:

MTP61-EUX: European transmitter version 470-832 MHz

MTP61-UK1: UK transmitter version 470-663 and 960-1075 MHz

MTP61-US: USA transmitter version 470-663 MHz and 940-960 MHz

### ANTENNAS CODE

Ant Label	Code	Band MHz
507	<b>AWSS-507</b>	470-547
590	<b>AWSS-590</b>	547-663
552	<b>AWSS-552</b>	510-595
646	<b>AWSS-646</b>	595-698
710	<b>AWSS-710</b>	663-760
796	<b>AWSS-796</b>	760-832
808	<b>AWSS-808</b>	806-810
950	<b>AWSS-950</b>	940-960
1k1	<b>AWSS-1K1</b>	960-1160
1k2	<b>AWSS-1K2</b>	1240-1260

### MIC PINOUT



Mic Mode	Pinout	Impedence
2 wires	1 = GND 3 = AF	7,15 kΩ
2 wires + bias	1 = GND 3 = AF+5 V	3,9 kΩ
3 wires	1 = GND 2 = 5 V 3 = AF	7,15 kΩ
AUX	1 = GND 3 = AF	36 kΩ

### CONFORMITY



## ACCESSORIES & RELATED



**Item: LBP61**  
rechargeable Lithium-ion battery  
Model CS-BCE10  
Part No. CGA-S008E  
3.7V, 1050 mAh, 3.9Wh  
Cameron Sino



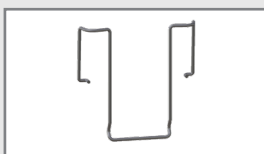
**Item: CAD30**  
Cable adapter, with AF male connector and 1 + 1 female connectors (for MIC and PTT button)  
compatible with MTP60/MTP61



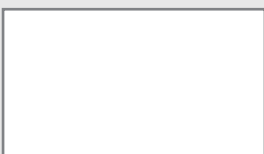
**Item: LBC61**  
battery charger capable of charging up to 4 MTP61 and 4 Lithium battery simultaneously



**Item: CAUSBM5P**  
cable from USB/A to magnetic connector 5pin-M, length=1050mm for battery charging, TX management and LTC Timecode sync



**Item: BCLW61**  
wire belt clip for MTP61



**Item: BCL61**  
spring loaded belt clip for MTP61



**Item: AWSS-<code>**  
Whip Antenna UHF for transmitters with SSMA antenna connector



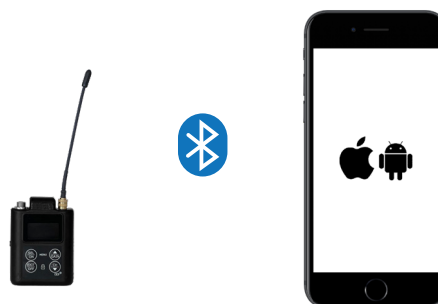
**Item: AWKIT8**  
kit 10 antennas with SSMA connector for MTP61 (with caps and tube)

## WISYCOM SOFTWARE

Easy configuration and monitoring thanks to the Wisycom Manager software for PC and Wisycom App for iOS or Android smartphone and tablet.



Easy connection to PC with Bluetooth or USB



Bluetooth interface and mobile app allows full control from mobile or tablet.

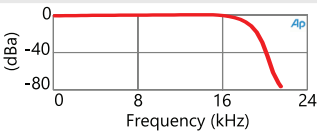
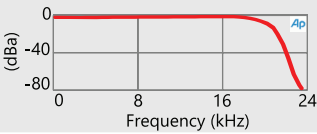


**MRK16**



Bluetooth 5.2 Low Energy with the MRK16 as a bridge allows remote control the MTP61

### TECHNICAL SPECIFICATIONS

RF SPECIFICATIONS	<b>Frequency range</b>	from 470 to 1260 Mhz, depends on the country (see Configurations)
	<b>Switchable channels</b>	2400 managed in 40 groups of 60 frequencies completely user programmable
	<b>Switching-window</b>	Up to 362 MHz, depending on band (see Configurations)
	<b>Frequencies</b>	Quartz PLL frequency synthesizer circuit (5 kHz step)
	<b>Frequency error</b>	±2.5 ppm, in the rated temperature range
	<b>RF Power</b>	10mW/ L10 W/ 20 mW/ L20 mW/ 50 mW/ 100 mW* <small>*on specific configurations</small>
	<b>Antenna connector</b>	SSMA
	<b>Modulation</b>	Wideband and Narrow-band with DSP based digital signal processing
	<b>Nominal deviation</b>	±40 kHz Wideband / ±25 kHz Narrowband
	<b>Peak deviation</b>	±56 kHz Wideband / ±35 kHz Narrowband
AUDIO SPECIFICATIONS	<b>Spurious emissions</b>	< 2 nW
	<b>Telemetry feature</b>	TX transmits also a digitally modulated sub-carrier, suitable for: <ul style="list-style-type: none"> <li>• tone-squelch operating</li> <li>• remote battery monitoring, compander and modulation control</li> <li>• optional PTT (push to talk) operation</li> </ul>
	<b>Noise Reduction system</b>	ENS - Wisycom ultra-high performance compander
	<b>AF bandwidth in NarrowBand mode (NB)</b>	Audio frequency response (dBa): <ul style="list-style-type: none"> <li>• 45 Hz ÷ 17 KHz (3dB)</li> </ul> 
	<b>AF bandwidth in WideBand mode (WB)</b>	Audio frequency response (dBa): <ul style="list-style-type: none"> <li>• 45 Hz ÷ 20 KHz (3dB)</li> </ul> 
	<b>Distortion</b>	< 0.3 % (0.15 % typ.)
	<b>SND/D ratio (Analogue)</b>	typ. 115 dB (A)rms with 40 kHz deviation; typ. 121 dB (A)rms with 56 kHz deviation Wideband typ. 115 dB (A)rms with 25 kHz deviation; typ. 121 dB (A)rms with 35 kHz deviation Narrowband
	<b>Audio input connector</b>	LEMO 3pin
	<b>Audio input level</b>	from -40 dBu (12mV RMS) to 6 dBu (1.55Vrms) adjustable in 1 dB steps input dynamic extension with an integrated limiter
	<b>Max input level</b>	+6 dBu (1.55Vrms) at clipping
RECORDER	<b>Storage media</b>	internal 64 GB micro SD memory card (industrial grade heavy duty)
	<b>Time code</b>	Linear Timecode decoding
	<b>Bit rate</b>	24 bit / 32 bit
	<b>Sampling rate</b>	48 kHz
	<b>Managing interface</b>	Bluetooth 5.2 low energy long range, proprietary waterproof magnetic connector 5 pin (USB HS +power +LTC)
OTHERS	<b>LED</b>	3 RGB LEDs (red, green and blue) for audio, RF, battery status and battery charger
	<b>Battery level indication</b>	percentage or minute/second
	<b>PTT function</b>	Pin 3 of AF connector can be controlled via an external PTT button
	<b>Display</b>	High contrast OLED white display (128 x 64 pixels)
	<b>Power supply</b>	Cameron Sino Lithium-ion battery Model CS-BCE10 Part No. CGA-S008E (3.7V, 1050 mAh)
	<b>Battery life</b>	approx. 8 hours @ 10mW
	<b>Temperature range</b>	-10 ÷ +55 °C
	<b>Dimensions</b>	66,8mm x 47mm x 17mm (HxWxD) without clip
	<b>Weight</b>	Approx. 72 g. without battery, 94 g. with battery