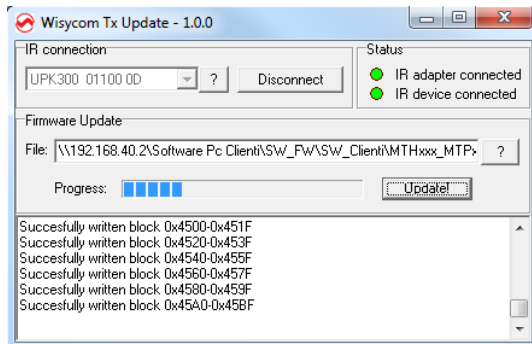



# MTHxxx-MTPxx-MTB40 Updater

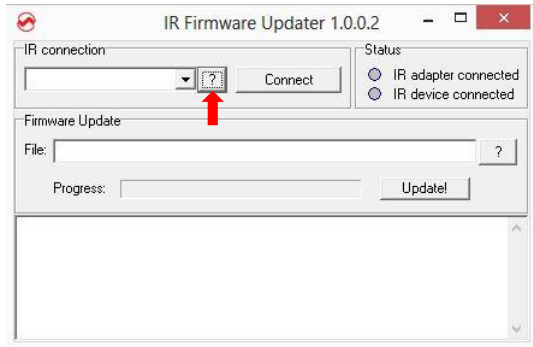
**Products:** MTH300-MTH400-MTP30-  
MTP40-MTP40S-MTP41-MTB40-MTB40S



## HOW TO USE WISYCOM TX UPDATER

Wisycom TX Updater is a program to upgrade the firmware on the Wisycom transmitters:

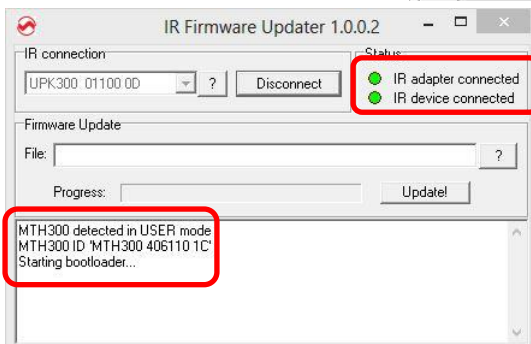
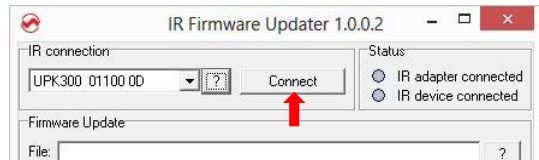
1. Download the .WFU file
2. Connect to the PC the infrared programming interface (UPK300E or UPKMini) using a USB cable (NOTE: it is not possible to use IR interface of MRK950 or MRK960)
3. Run Wisycom TX Updater
4. Click on  button and wait that the infrared programming interface (UPK300E or UPKMini) is showed in the box




5. Power up the transmitter, move the wireless power switch in upper position (MTHxxx) or 'I' position (MTPxx) and enable the IRDA interface

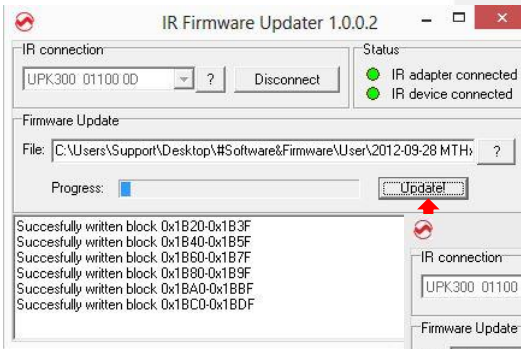
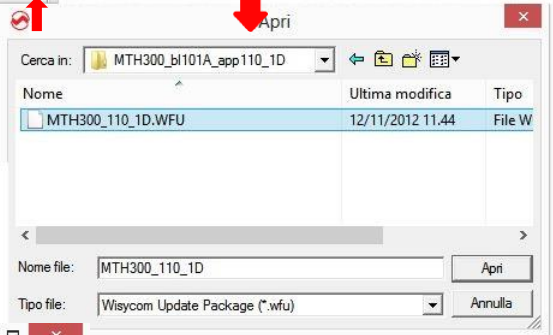
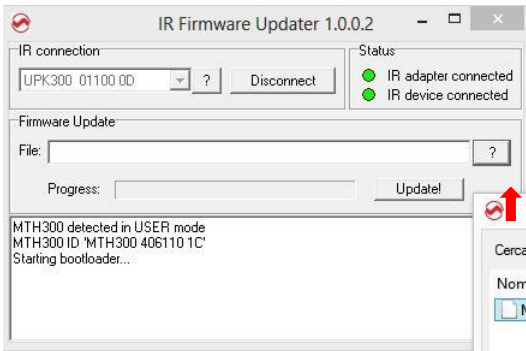


6. Click on Connect button,

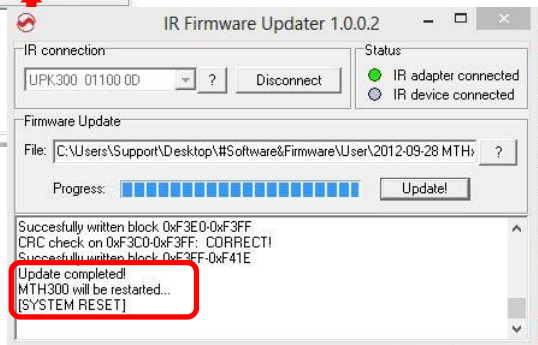


wait that both leds on the Status Panel become green and check in the lower box that the transmitter are in bootloader mode

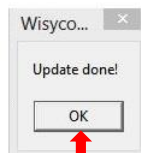
- Click on  button in the Firmware Update panel and select the .WFU file (see step1)



- Click on Update button and check the progress of the upgrade process in the blue bar



- Wait until the window whit the "Update done!" appears
- Check the firmware version in the transmitter
- Close IR Firmware Updater



---

## WISYCOM TX UPDATER – REVISION LIST

---

The following table reports the released versions of Wisycom TX Updater and for each one there are listed:

- added features → add
- fixed bugs → fix
- improvement/modified features → mod

<b>Version</b>	<b>Date</b>	<b>Added or modified features/Bugs Fixed</b>
<b>1.0.0</b>	23/01/2015	Add: support UPK Mini
<b>1.0.0.5</b>	11/05/2014	Mod: management of the US devices
<b>1.0.0.3</b>	07/12/2012	Add: device control: the program checks if the connected device is congruent with the firmware selected.
<b>1.0.0.2</b>	04/07/2013	Add: password bootloader for MTP40
<b>1.0.0.1</b>	05/07/2011	First version