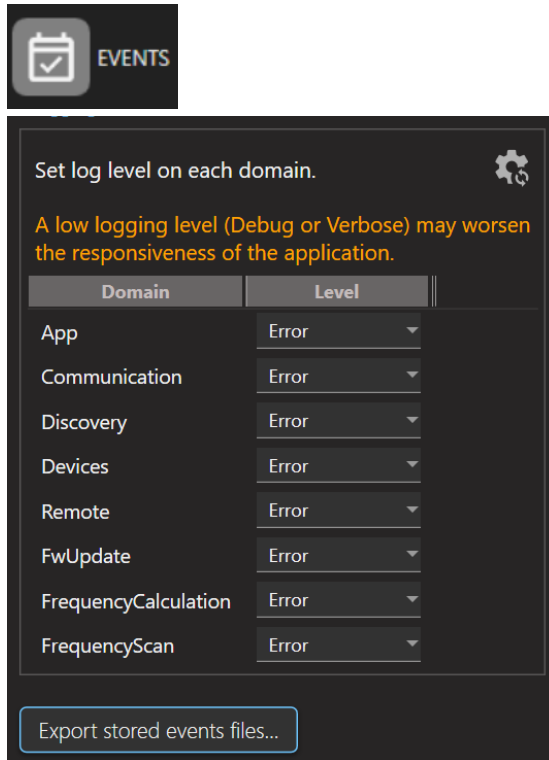


Wisycom Manager v5.1.0 – Release Note

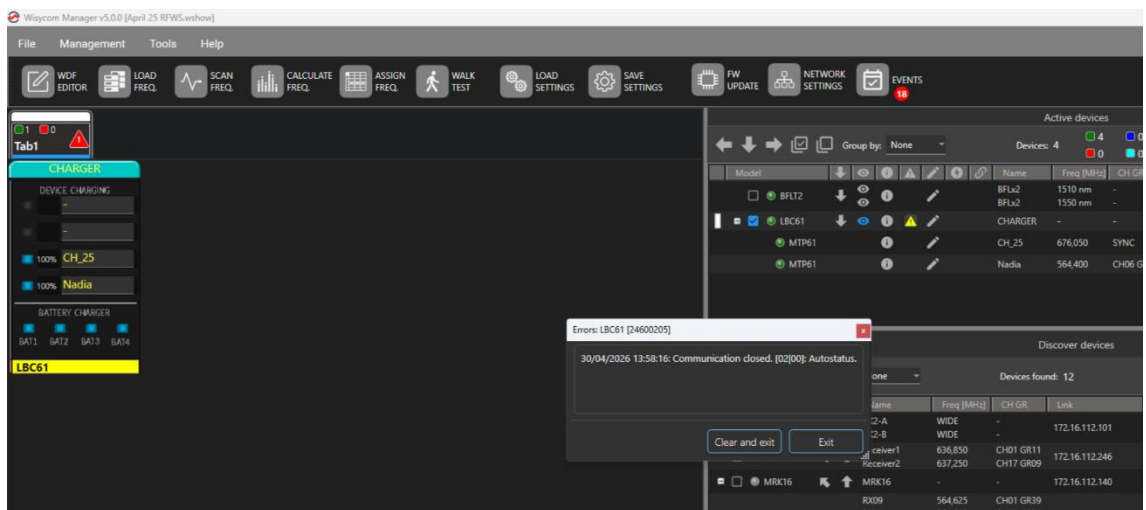
Wisycom Manager v5.1.0 introduces improvements in device communication stability and alarm management.

List of Changes

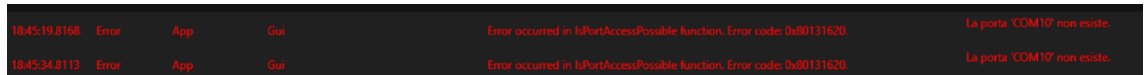
- Changed the severity level of the EVENTS logs from “Warning” to “Error”



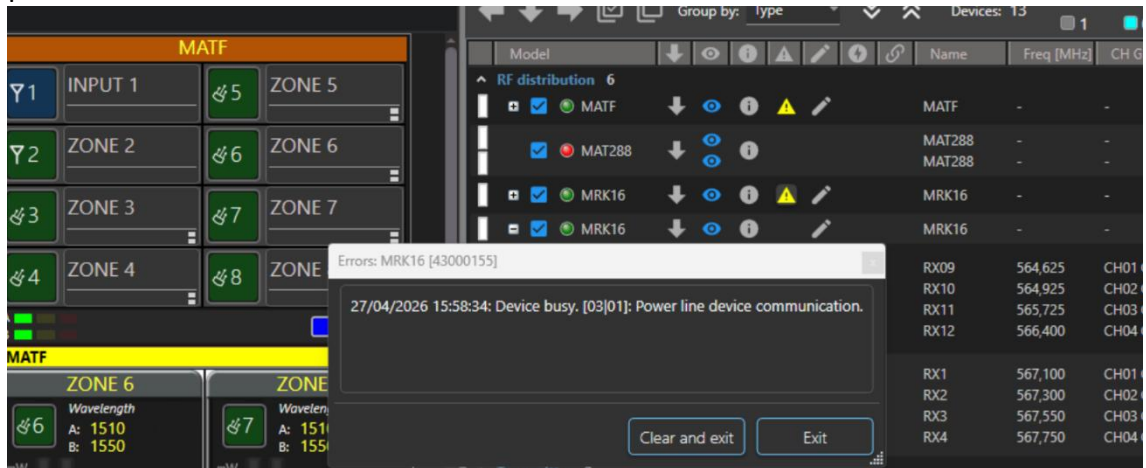
- Reversed the sorting order of the EVENTS logs (most recent events displayed first)
- Removed the MCR54 alarm popup related to **Modulation/Compander mismatch**
- Fixed an LBC61 “communication closed” alarm



- Fixed an error message occurring while discovering a previously connected COM interface that is no longer available



- Fixed the “power line device busy” error on MRK16 and MATF when LFA/ADFA/BFA antennas were previously connected and are no longer present



- Fixed a configuration issue on MAT244 in 4:2 mode (missing parameters and related errors)
- Fixed an issue in the **FREQ. CALC.** function when the working range is above 800 MHz

New Firmware Available in the Library

MPR60 – Firmware v1.3.1

- Fixed gain levels in 3ch-IFB mode
- Added Setup Wizard after Factory Preset restore
- Minor bug fixes

MTK952A – Firmware v4.3.0

- Fixed “07 WR_CH” error during SYNC/CLONE from MTK952A configured on a Free Channel (Group: – / Channel: –) to MPR50-IEM

