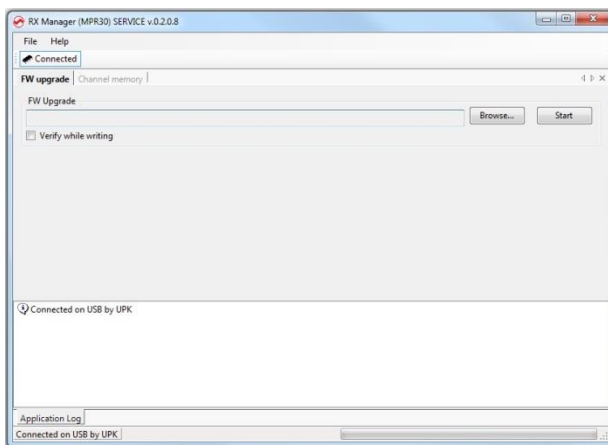


MPR30 Manager

Products:

MPR30-IEM, MPR30-IFB*, MPR30-ENG





*Only for MPR30 RX Manager v.0.2.0.10 or later versions

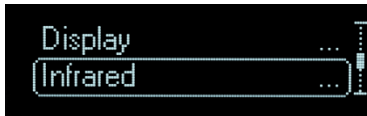
HOW TO USE MPR30 RX MANAGER


Wisycom MPR30 RX Manager can be used to load or save the channels memory and upgrade the firmware.

Instruction to connect MPR30 using UPK300 / UPK300E:

1. Connect to the PC the infrared programming interface (UPK300 or UPK300E) using a USB cable (NOTE: it is not possible to use IR interface of MRK950 or MRK960)
2. Check if the version of *ENG RX Manager* installed in your PC is the latest version. If not, uninstall the *ENG RX Manager* active in your PC and install the new version as indicated in the section [How to update ENG RX Manager](#) .
3. Run *ENG RX Manager*
4. Power up the receiver MPR30 and enable the IRDA interface:

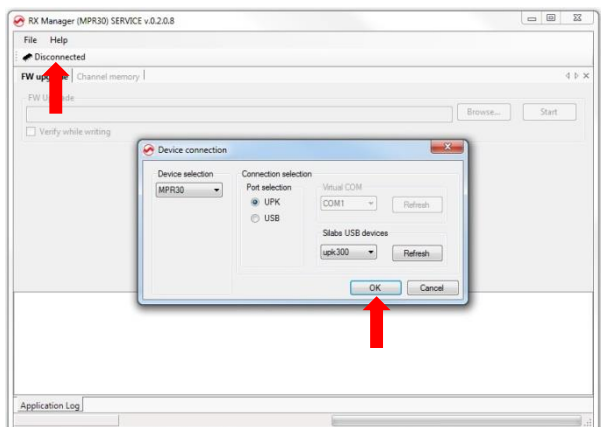
- a. push  button,
- b. push  button until that **Infrared** submenu appears on the display (Headphones>Edit RX>Display>Infrared)



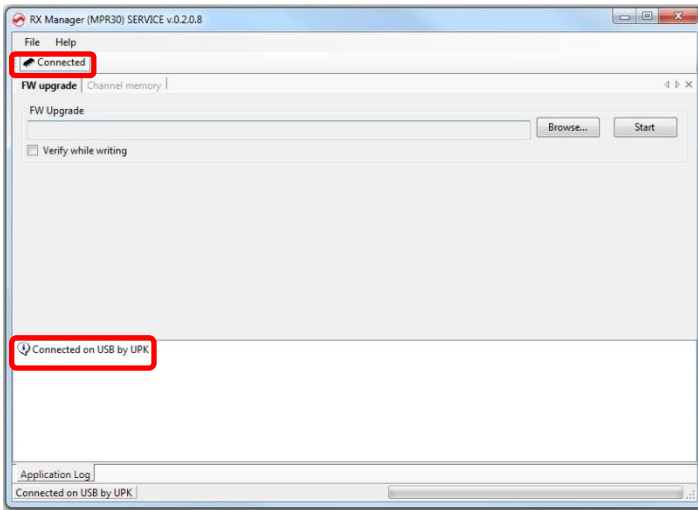
- c. push again  button and check the display shows 'IR IF active'



5. Put in contact MPR30 and UPK300/UPK300E
6. Push Disconnected button. On the Device connection windows select UPK port and verify that upk300 is selected on the Silabs USB devices panel. If upk300 device is not showed, push Refresh button and/or try to disconnect and reconnect the USB cable connected to the UPK300. Then click OK.



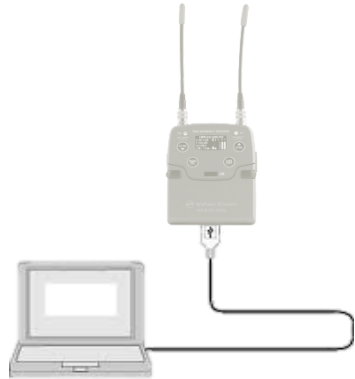
7. If the connection is ended well, the Connected icon is showed on the top of the panel and “Connected on USB by UPK” is displayed on the information panel



Instruction to connect MPR30 using USB cable:

In order to use the micro USB port to configure the MPR30, it is necessary to install the MPR30 USB driver (see How to install MPR30 USB driver)

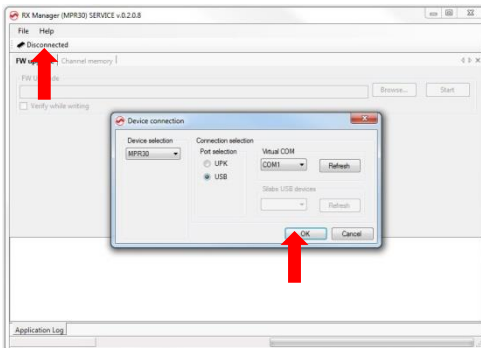
1. Connect the MPR30 to the PC through the micro USB interface using the USB cable
2. Check if the version of *ENG RX Manager* installed in your PC is the latest version. If not, uninstall the *ENG RX Manager* active in your PC and install the new version as indicated in the section [How to update ENG RX Manager](#).



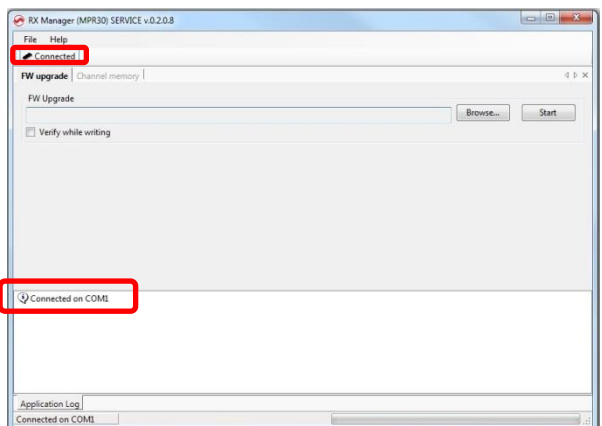
3. Run *ENG RX Manager*

4. Power up the receiver MPR30

5. Push Disconnected button. On the Device connection windows select USB port and verify that a COMx is selected on the Virtual COM panel. If COMx is not showed, push Refresh button and/or try to disconnect and reconnect the USB cable connected to the MPR30. Then click OK.



6. If the connection is ended well, the Connected icon is showed on the top of the panel and "Connected on COMx" is displayed on the information panel



How to load/save channels memory

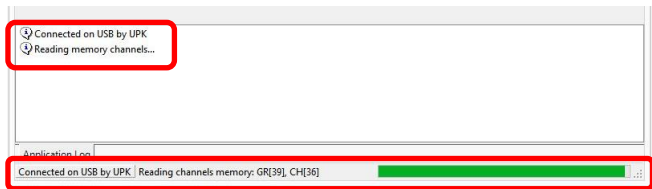
Write:

Push the button **Write from WDF file...** and select the wdf file to load on the MPR30.

Read and save:

Push the button **Read and save to WDF file...**, insert the .wdf file name and the path where to save the wdf file.

During the process of writing/reading & saving, a green bar below the panel shows the progress of the process and on the information panel it is possible to verify what the application is doing.



To **Modify** the wdf file, it is possible to use the spreadsheet *FREQUENCY 2010 v16.xls* available on the website:

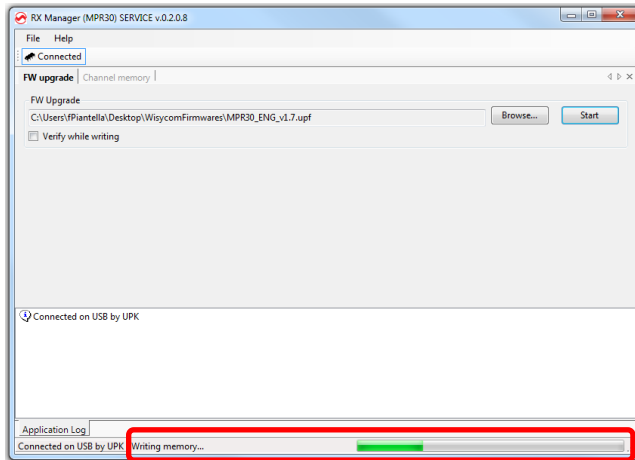
- open the file and enable changes and macro
- load the wdf file clicking on READ WDF button
- execute the desiderate changes
- save the wdf file clicking on SAVE WDF button

The WDF thus modified can be used to write on the MPR30's channels memory.

How to upgrade the firmware

Select **FW upgrade** panel

1. Push the **Browse** button and select the upk file
2. Put the receiver in bootloader mode: power on the MPR30 keep pushing both the arrow buttons). When the receiver is in bootloader mode, all the led in the front panel are turn on.
3. Click on Start button and check the progress of the upgrade process in the green bar



RX MANAGER MPR30 - INSTALLATION

How to install RX Manager

Run the executable file (i.e. RX Manager (MPR30) Setup vx.x.x.exe) and follow the installation instructions. **WARNING:** If it is the first installation and Wisycom USB driver is not already installed in the PC, please see [Wisycom Driver section](#).

How to update RX Manager

Uninstall the *RX Manager* program active in your computer and afterwards install the newest version of *RX Manager*.

Wisycom RX Manager - Version history

The following table reports the released versions of *ENG RX Manager* and for each one there are listed:

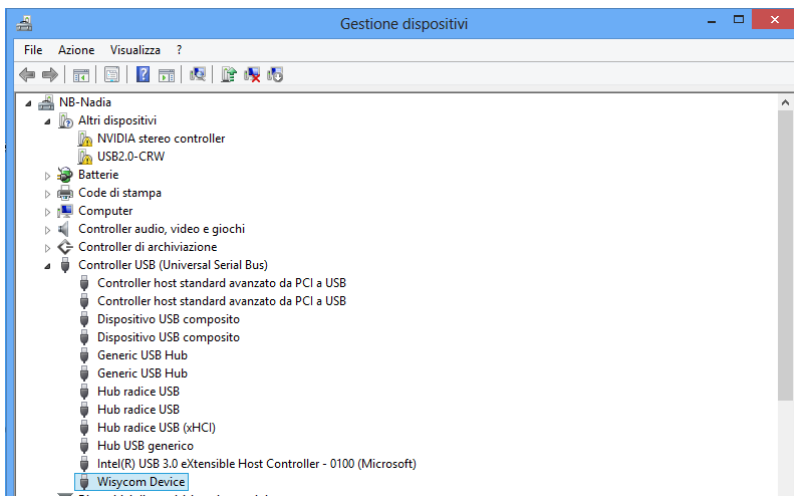
- added features → add
- fixed bugs → fix
- improvement/modified features → mod

Version	Date	Added or modified features/Bugs Fixed
0.2.0.10	16/01/2014	-add: USB drivers for MPR30-IFB
0.2.0.8	25/06/2013	-add: MPR30-IEM manager and firmware upgrade
0.2.0.7	22/05/2013	-fix: bug load channels with Windows7
0.2.0.4	21/12/2012	First version

WISYCOM DRIVERS

How to check if the Wisycom USB driver of UPK300 is installed on the PC

- connect the device using USB cable (UPK300E)
- open Windows Control Panel
- select Hardware and Sound
- select Device Manager
- verify that the hidden devices are showed
- check item Controller USB device: if Wisycom Device is present, then



the USB Wisycom Driver of UPK300 is installed. Otherwise it is necessary to install the driver.

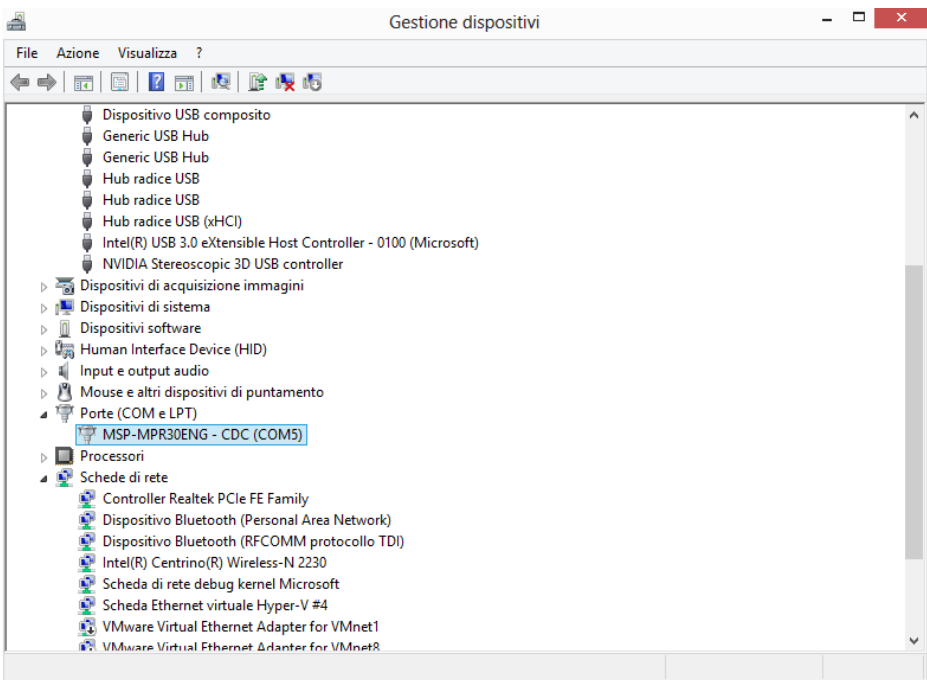
How to install the driver for USB interface of UPK300

- Download Drivers.zip from the web site
- Unzip the folder
- Run DriverInstaller.exe

For Windows 8 platform, if you have a problem during the installation (ex. the INF file is not correct,...) please see section "[How to install Wisycom Driver on Windows 8](#)".

How to check if the Wisycom USB driver of MPR30 is installed on the PC

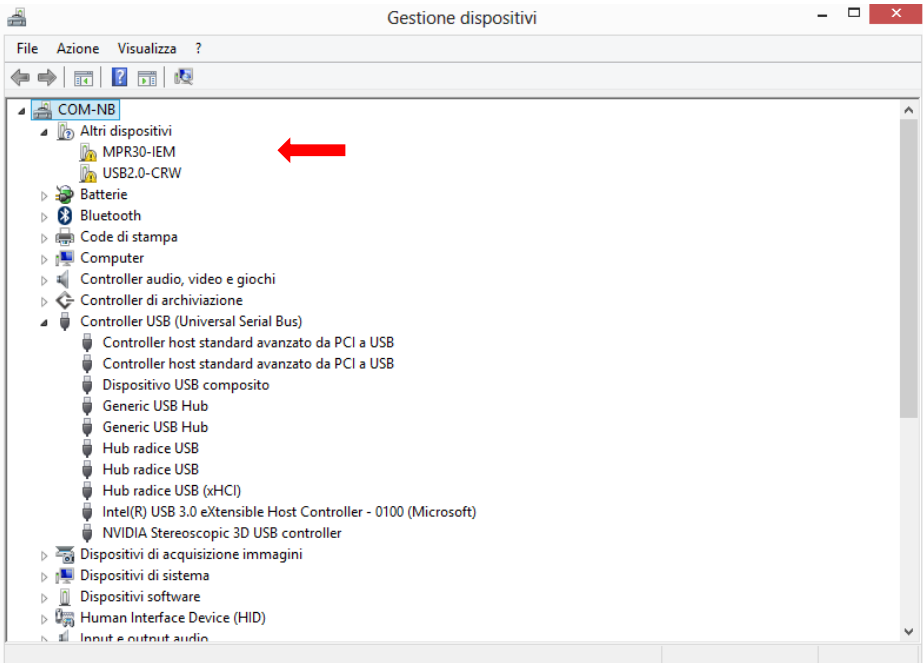
- connect the device using USB cable from the microUSB of MRP30 and the USB of PC
- open Windows Control Panel
- select Hardware and Sound
- select Device Manager
- verify that the hidden devices are showed
- check item COM and LPT ports: if MSP-MPR30ENG – CDC or MSP-MPR30ENG – CDC is present, then



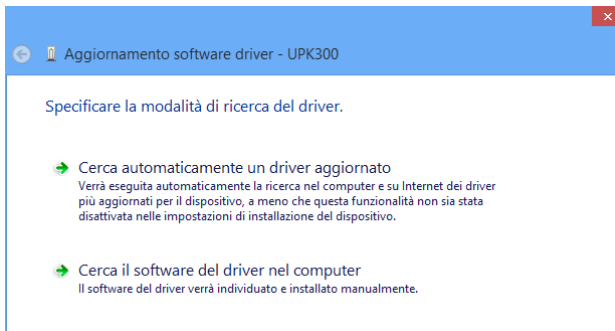
the USB Wisycom Driver of MPR30 is installed. Otherwise it is necessary to install the driver.

How to install the driver for USB interface of MPR30

- connect the microUSB of MRP30 to the USB interface of the PC
- open Windows Control Panel
- select Hardware and Sound
- select Device Manager
- click MPR30 device

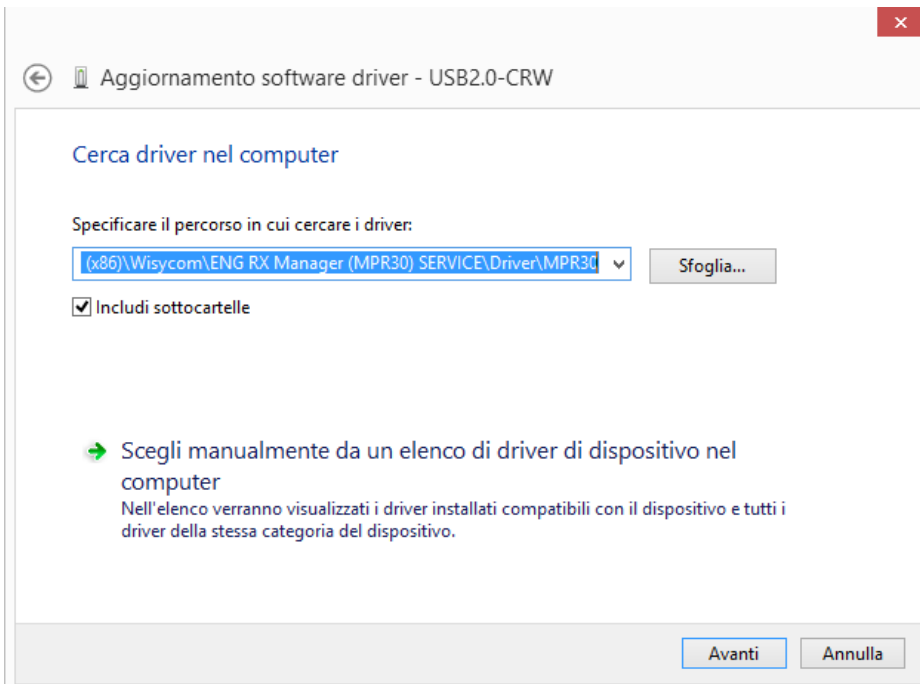


- with the right button of the mouse, select Update the Driver: the following windows appears



- Select *Search for the driver on the computer*, and select the Wisycom folder where the MRP30 manager is installed

Es: `C:\Program Files (x86)\Wisycom\ENG RX Manager (MPR30) SERVICE\Driver\MPR30`



- Confirm pushing Next button

For Windows 8 platform, if you have problem during the installation (ex. the INF file is not correct,...) please see section "[How to install Wisyscom Driver on Windows 8](#)".

Platforms Supported

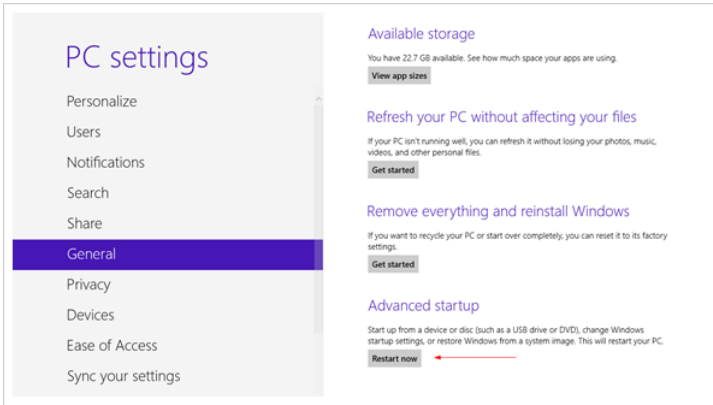
Microsoft Windows XP SP3 (32-bit and 64-bit)

Microsoft Windows 7 (32-bit and 64-bit)

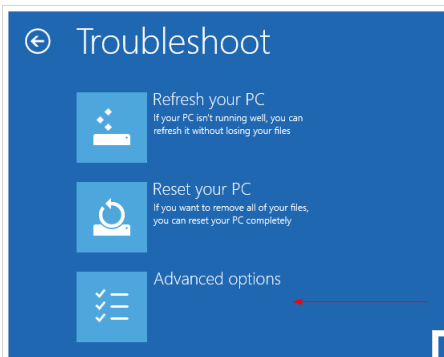
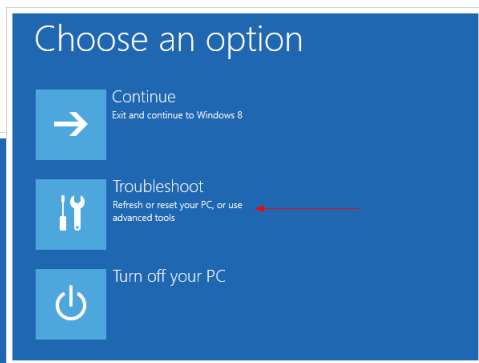
Microsoft Windows 8 (32-bit and 64-bit)

How to install Wisycom Driver on Windows 8

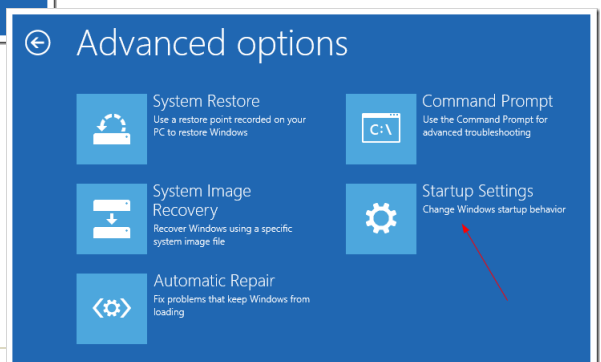
1. Access to the main Charm Bar moving the cursor to the bottom right corner and press Setting Charm or press **win + I** → The Settings charm menu will appear.
2. Click **Change PC Settings** at the bottom.
3. Go to **General**, and scroll to the bottom of the page, click **Restart Now** button under **Advanced Startup** section. Remember to save all your work first before clicking it.



4. The computer reboots to a startup menu, in which click **Troubleshoot**.

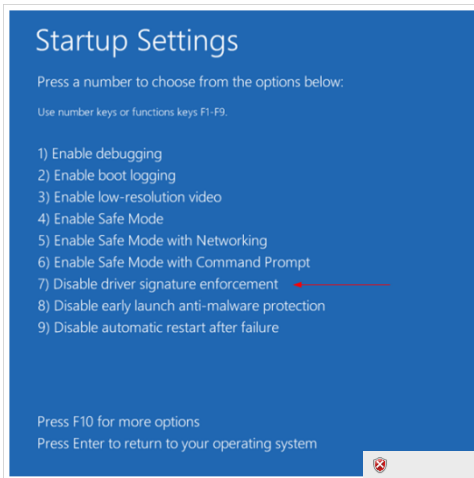
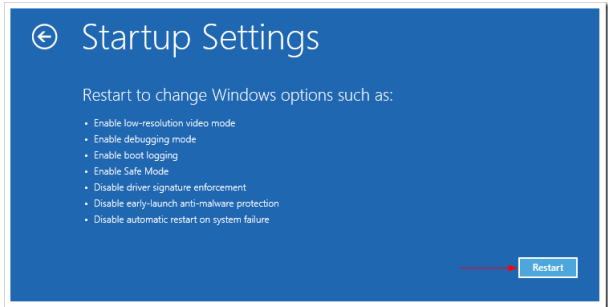


5. Click **Advanced Options** at next screen.



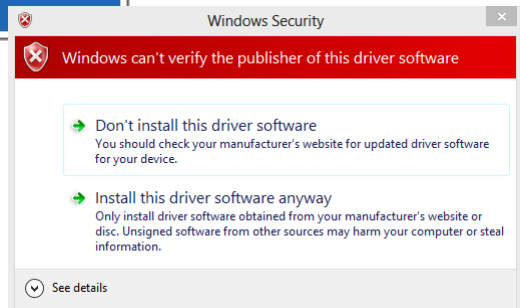
6. Choose **Startup Settings** next

7. Click **Restart** button.



8. The computer reboots and prompts another menu to choose. One of the items is to **Disable driver signature enforcement**. Press number **7** or **F7** to continue booting to Windows 8 with digital sign enforcement disabled.

9. Install Wisycom Driver as indicate in the [Wisycom driver](#) section. When the Windows security alert appears (see next window), choose “Install this driver software anyway”



For more information or support, please visit our www.wisycom.com or email us at support@wisycom.com